



HYDROFIRE ΕΠΕ

Buildings - Industry - Marine – Waterworks
END OF AG. PANTELEIMONOS Str. (ELEONAS)
GR-12241 EGALEO,
Tel.: +30 210 3412 749-750 Fax: +30 210 3412 406
www.hydrofire.gr, email: info@hydrofire.gr



CANNE SCHIUMA CON DEFLETTORE Mod. FI-CSL FOAM BRANCHPIPE WITH BAFFLE Mod. FI-CSL

CE



CARATTERISTICHE:

- Corpo: in acciaio inox
- Attacco: flangiato
- Ugello: Alluminio
- Resa schiuma: 1 ÷ 7

CHARACTERISTICS:

- Body: stainless steel
- Connection: flanged
- Nozzle: light alloy
- Expansion: 1 ÷ 7



HYDROFIRE ΕΠΕ

Buildings - Industry - Marine – Waterworks
 END OF AG. PANTELEIMONOS Str. (ELEONAS)
 GR-12241 EGALEO,

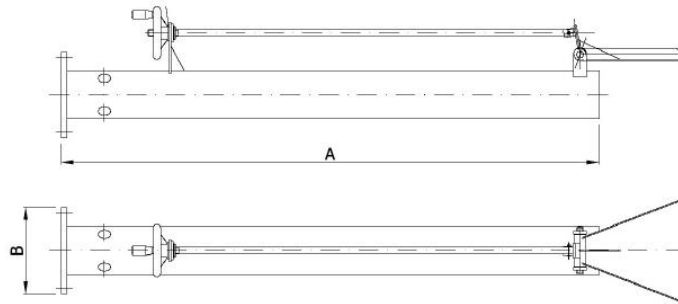
Tel.: +30 210 3412 749-750 Fax: +30 210 3412 406
www.hydrofire.gr, email: info@hydrofire.gr



EN 1090-1
 FPC - verification according to VCP 21 de
 BUREAU VERITAS
 Certification



Member of CIBQ Federation



MODELLO/MODEL	PESO / WEIGHT	A (mm)	B (mm)
FI-CSL 5	4,0 Kg.	900	145
FI-CSL 10	4,0 Kg.	900	145
FI-CSL 15	4,0 Kg.	900	145
FI-CSL 20	4,0 Kg.	1.000	145
FI-CSL 25	4,0 Kg.	1.000	160
FI-CSL 30	4,0 Kg.	1.000	160
FI-CSL 40	4,0 Kg.	1.000	160
FI-CSL 50	12 Kg.	1.100	180
FI-CSL 60	12 Kg.	1.100	180
FI-CSL 70	12 Kg.	1.300	180
FI-CSL 80	13 Kg.	1.300	240
FI-CSL 100	13 Kg.	1.300	240

Throw Curves

○ FI-CSL 10 ● FI-CSL 30 ● FI-CSL 50 ● FI-CSL 70 ● FI-CSL 100

