



HYDROFIRE ΕΠΕ

Buildings - Industry - Marine – Waterworks

END OF AG. PANTELEIMONOS Str. (ELEONAS)

GR-12241 EGALEO,

Tel.: +30 210 3412 749-750 Fax: +30 210 3412 406

www.hydrofire.gr, email: info@hydrofire.gr



Ref. : CBL 4141.pas

Rev. : Initial

Date : 03/04/2018

Page : 1/1

THREADED BALL CHECK VALVE

CBL 4141



APPLICATION

General uses: waste water, sticky fluids, raising water (purification, water treatment, pumping...)

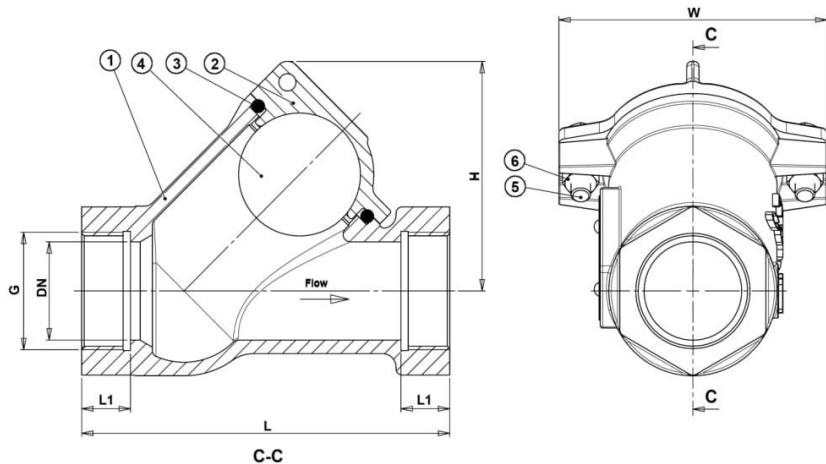
GENERAL CHARACTERISTICS

Design in accordance with standard EN 16767.
 BSP threaded connection.
 Tight and working in horizontal or vertical position.
 Low head loss.
 Full bore thanks to the moving of the ball.
 Self-cleaning ball.
 Easy and quick disassembling cover.
 Body: oven baked epoxy 150 µm, RAL 5015.



CONSTRUCTION

6	Nut	Stainless steel A2-70
5	Screw	Stainless steel A2-70
4	Ball	DN 25-50 : Nitril DN 65 : Aluminium + Nitril
3	O-ring	NBR
2	Cover	Ductile iron EN-GJS-500-7
1	Body	Ductile iron EN-GJS-500-7
Pos.	Description	Material



DIMENSIONS

DN		L	H	G	L1	W	Weight (kg)
mm	inch						
25	1"	125	75	G1"	16	96	1,3
32	1 1/4"	133	79	G1 1/4"	18	96	1,51
40	1 1/2"	151	93	G1 1/2"	20	110	2,12
50	2"	175	111	G2"	24	132	3,23
65	2 1/2"	202	111	G2 1/2"	28	132	4,27

WORKING CONDITIONS

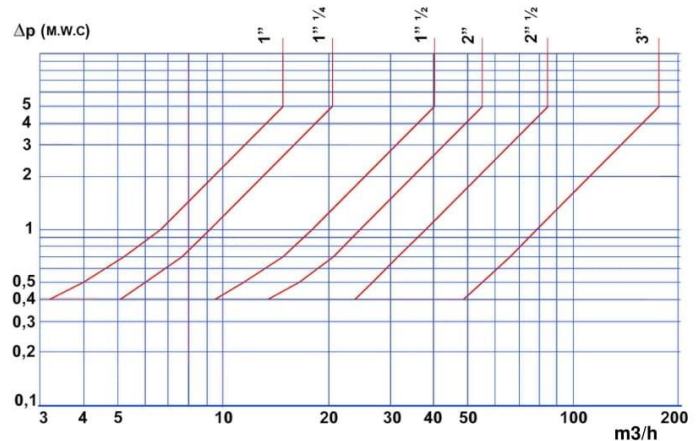
Maximum working pressure : 10 bar.
 Maximum temperature : -10°C / +90°C.
Warning: On request for low load.

Pressure test according to standards EN 12266-1, DIN 3230, BS 6755 and ISO 5208 :
 -Body : 15 bar.
 -Seat : 11 bar.

STANDARDS

DIRECTIVE 2014/68/UE «Equipment under pressure»:
 products excluded (article 3 § 3), except gaz of group 1.
 BSP threaded according to standard ISO 228-1.

Head loss



The photographs and technical art works are not contractual. The specifications of the presented products are open to modifications without previous advice.