



# HYDROFIRE ΕΠΕ

Buildings - Industry - Marine – Waterworks  
END OF AG. PANTELEIMONOS Str. (ELEONAS)  
GR-12241 EGALEO,  
Tel.: +30 210 3412 749-750 Fax: +30 210 3412 406  
[www.hydrofire.gr](http://www.hydrofire.gr), email: [info@hydrofire.gr](mailto:info@hydrofire.gr)



## FireLock™ *Fire-Pac* Series 745



### 1.0 PRODUCT DESCRIPTION

#### Available Sizes

- 1 ½ – 8"/DN40 – DN200

#### Application

- The Victaulic FireLock™ Series 745 *Fire-Pac* is a completely pre-assembled and tested fire protection valve with trim and optional components enclosed in a metal cabinet.
- The FireLock™ *Fire-Pac* include a water supply shutoff valve, the sprinkler system fire protection valve, alarm line pressure switches, air supervisory pressure switches, a valve position supervisory switch, and pressure gauges that are easily viewed through a window in the cabinet door.
- All electrical connections from inside the *Fire-Pac* to the control panel are pre-wired. Electrical connections are accessed inside the cabinet in a wiring panel box. Bulkhead fittings are factory provided for external hook-ups. All electrical component literature is included with the *Fire-Pac* cabinet.
- The manual pull station, mounted on the front of the *Fire-Pac* cabinet, is accessible through a sealed door. Once the door to the manual pull station is opened, the valve can be manually tripped.
- The pipe feed and drain connections can be located on either the left side, right side, or bottom of the enclosure. For ease of maintenance, the side and back panels of the cabinet can be removed for easy access to service equipment.
- Use with Victaulic FireLock™ grooved pipe couplings and fittings.

#### Installation Options

- **The FireLock™ *Fire-Pac* can incorporate any of the following available valve configurations:**
  - Wet
  - Dry – Actuated and/or Accelerated
  - Deluge – Wet pilot, dry pilot, and electric actuation
  - Preaction – Non-interlock, Single Interlock, and Double-Interlock
  - Preaction – AutoConvert preaction to dry

ALWAYS REFER TO ANY NOTIFICATIONS AT THE END OF THIS DOCUMENT REGARDING PRODUCT INSTALLATION, MAINTENANCE OR SUPPORT.



# HYDROFIRE ΕΠΕ

**Buildings - Industry - Marine – Waterworks**  
END OF AG. PANTELEIMONOS Str. (ELEONAS)  
GR-12241 EGALEO,  
Tel.: +30 210 3412 749-750 Fax: +30 210 3412 406  
[www.hydrofire.gr](http://www.hydrofire.gr), email: [info@hydrofire.gr](mailto:info@hydrofire.gr)



[victaulic.com](http://victaulic.com)

## 1.0 PRODUCT DESCRIPTION (CONTINUED)

### Installation Options

- If required, the system can be supplied with an additional shutoff valve installed above the sprinkler system fire protection valve. This additional shutoff valve can provide greater system integrity during trip tests. NOTE: All shutoff valves are pre-wired for supervisory alarms.
- When system air pressure is required, a compressor, Series 7G7 Nitrogen Fill Kit, or other external air/gas source can be supplied with an optional air tank and air maintenance device for complete system integration.
- The Notifier RP-2001 conventional releasing panel is the standard releasing panel, a compact single enclosure, containing the power supply, standby batteries and a battery charger as well as connections for the detectors, waterflow and tamper switches, and the solenoid valve. The Notifier RP-2001 conventional releasing panel is software-programmed for field setting as two area or single area cross-zoned control. Mounting slots are provided for optional module boards.
- The *Fire-Pac* is for indoor or outdoor use (outdoor use when ordered with the optional weatherproofing). Optional weatherproofing is available when the enclosure is constructed for indoor or outdoor use to provide a degree of protection for the equipment inside the enclosure against the ingress of solid foreign objects or water, and that will be undamaged by the external formation of ice on the enclosure.
- Optional heater and insulation available. Heater trips at 50°F (10°C), while a temperature alarm switch will activate at 40°F (4.5° C). 20°F (-6.7°C) minimum ambient operating temperature. R3.2 ½" foil faced insulation is applied to all enclosure sides.

## 2.0 CERTIFICATION/LISTINGS



## 3.0 SPECIFICATIONS - MATERIAL

### Cabinet Specifications

#### Configuration:

16-fold frame  
Door(s) with foamed-in-place polyurethane gasket  
4-pt locking system  
Roof and rear wall

#### Material:

Sheet steel  
Frame, roof, rear wall, floor: 16 gauge (1.5mm)  
Door: 14 gauge (2.0mm)

#### Finish:

Frame: Dipcoat-primed  
Door, roof, rear wall: Dipcoat-primed, powder-coated in textured RAL 3020 (traffic red)

### Device Specifications

**Body:** Ductile iron, ASTM A536 Grade 65-45-12

**Clapper:** Aluminum bronze UNS-C95500

**Shafting:** Shafts are 17-4 stainless steel

**Latch:** Aluminum bronze UNS-C95500

**Clapper Seal:** EPDM, ASTM D2000

**Seat and Bushing Seals:** Nitrile

**Springs:** Stainless steel (300 Series)



# HYDROFIRE ΕΠΕ

Buildings - Industry - Marine – Waterworks  
 END OF AG. PANTELEIMONOS Str. (ELEONAS)  
 GR-12241 EGALEO,

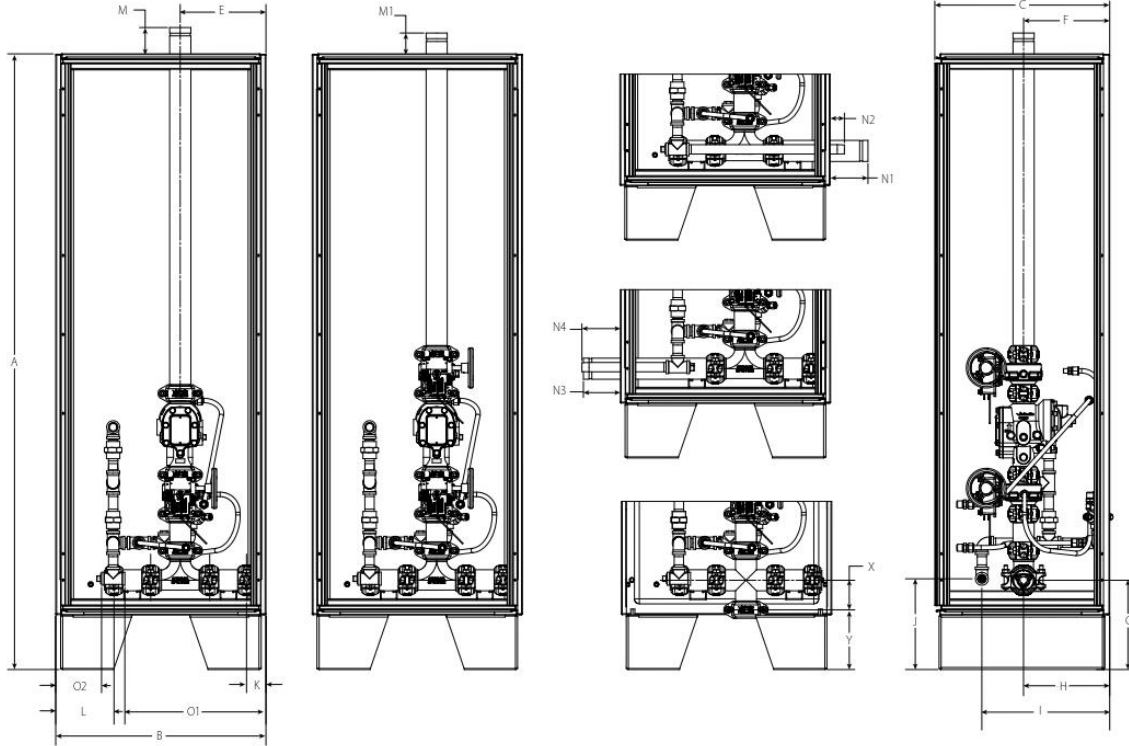
Tel.: +30 210 3412 749-750 Fax: +30 210 3412 406  
 www.hydrofire.gr, email: info@hydrofire.gr



victaulic.com

## 4.0 DIMENSIONS

Fire-Pac Cabinets Containing 1½ – 2"DN40 – DN50 Valve Sizes



Nom. Valve Size inches DN	Dimensions																				Weight				
	A	B	C	E	F	G	H	I	J	K	L	M Riser Only		M1 With Added Control Valve		N1	N2	N3	N4	O1	O2	P <sup>1</sup>	X	Y	Approx. (Each) lb kg <sup>2</sup>
												Tee Supply	Cross Supply	Tee Supply	Cross Supply										
1 ½	69.1	23.6	19.9	9.6	9.7	9.8	9.7	14.4	10.4	2.7	7.1	4.5	4.5	4.5	4.5	4.2	3.6	4.4	4.3	13.8	7.2	12.1	2.8	7.0	430.0
DN40	1755	599	505	244	246	249	246	366	264	69	180	114	114	114	114	107	91	112	109	351	183	307	71	178	195
2	69.1	23.6	19.9	9.6	9.7	10.0	9.7	14.4	10.2	2.2	6.5	2.9	2.9	2.3	2.3	4.3	1.6	4.1	4.3	15.9	5.1	12.1	3.3	6.7	470.0
DN50	1755	599	505	244	246	254	246	366	259	56	165	74	74	58	58	109	41	104	109	404	130	307	84	170	213

<sup>1</sup> Dimension P applies only to the cabinet with nitrogen bracket option.  
<sup>2</sup> Approximate weight applies only to Fire-Pac cabinets that do not contain the nitrogen option.

### NOTES

- Dimensions may vary due to tolerances during manufacturing and assembly.
- The nitrogen cylinder is not provided with the nitrogen fill kit.
- Bolt hole placement 4½" in from the sides, and 2" in from the front and back with ¼" diameter.



# HYDROFIRE ΕΠΕ

Buildings - Industry - Marine – Waterworks

END OF AG. PANTELEIMONOS Str. (ELEONAS)

GR-12241 EGALEO,

Tel.: +30 210 3412 749-750 Fax: +30 210 3412 406

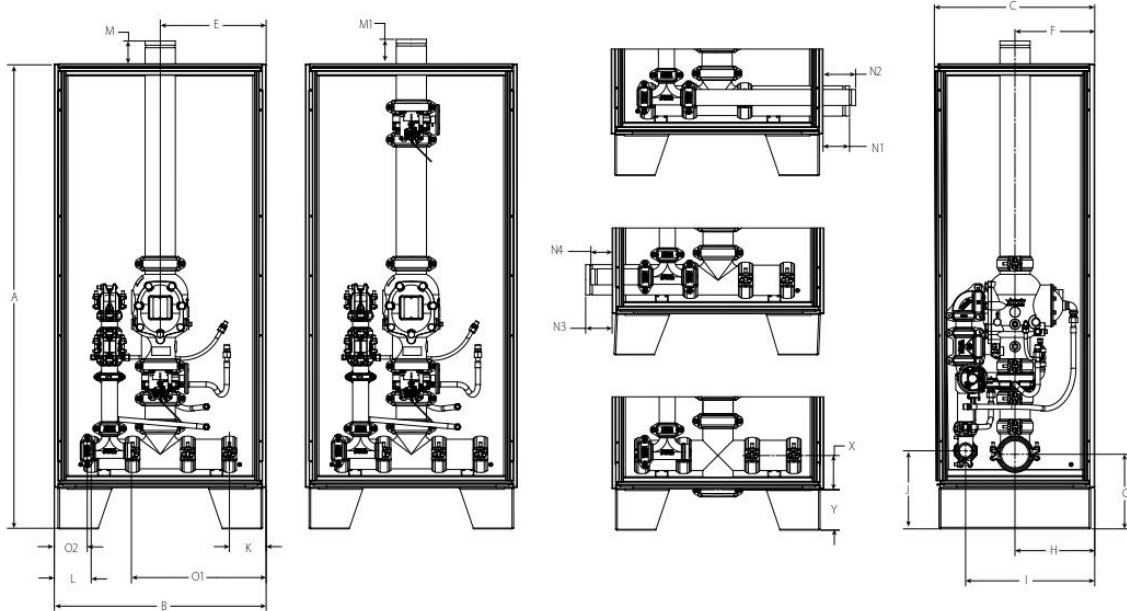
www.hydrofire.gr, email: info@hydrofire.gr



victaulic.com

## 4.0 DIMENSIONS (CONTINUED)

Fire-Pac Cabinets Containing 2½ – 8" / 73.0 mm – DN200 Valve Sizes



Nom. Valve Size inches DN	Dimensions																				Weight				
	A	B	C	E	F	G	H	I	J	K	L	M Riser Only		M1 With Added Control Valve		N1	N2	N3	N4	O1	O2	P <sup>1</sup>	X	Y	Approx. (Each) lb kg <sup>2</sup>
												Tee Supply	Cross Supply	Tee Supply	Cross Supply										
2½	69.1	31.5	23.8	15.8	11.8	10.3	11.8	19.2	12.6	4.6	4.6	3.1	3.8	3.1	3.9	3.9	4.4	3.9	3.8	19.2	6.7	12.1	3.8	6.5	516.0
	1755	800	605	401	300	262	300	488	320	117	117	79	97	79	99	99	112	99	97	488	170	307	97	165	234
3 DN80	69.1	31.5	23.8	15.8	11.8	10.6	11.8	19.2	12.8	5.2	5.2	3.8	4.6	3.8	4.7	4.0	4.4	4.0	3.8	19.2	6.7	12.1	4.3	6.3	522.0
	1755	800	605	401	300	269	300	488	325	132	132	97	117	97	119	102	112	102	97	488	170	307	109	160	237
4 DN100	69.1	31.5	23.8	15.8	11.8	11.1	11.8	19.2	11.6	5.5	5.5	3.4	4.4	3.6	4.6	3.9	4.9	3.9	3.2	20.0	4.9	12.1	5.1	6.0	600.0
	1755	800	605	401	300	282	300	488	295	140	140	86	112	91	117	99	124	99	81	508	124	307	130	152	272
6 DN150	69.1	31.5	23.8	15.8	11.8	12.1	11.8	19.2	12.4	4.0	4.0	4.9	5.9	4.7	5.7	5.7	6.2	5.7	5.1	19.9	5.0	12.1	6.6	5.5	660.0
	1755	800	605	401	300	307	300	488	315	102	102	124	159	119	145	145	157	145	130	505	127	307	168	140	299
8 DN200	69.1	31.5	23.8	15.5	11.8	13.2	11.8	19.2	12.5	2.5	2.5	4.6	5.4	4.7	5.5	5.6	4.9	5.6	4.7	21.3	3.7	12.1	7.9	5.3	940.0
	1755	800	605	394	300	335	300	488	318	64	64	117	137	119	140	142	124	142	119	541	94	307	201	135	426

<sup>1</sup> Dimension P applies only to the cabinet with nitrogen bracket option.

<sup>2</sup> Approximate weight applies only to Fire-Pac cabinets that do not contain the nitrogen option.

### NOTES

- Dimensions may vary due to tolerances during manufacturing and assembly.
- The nitrogen cylinder is not provided with the nitrogen fill kit.
- Bolt hole placement 4½" in from the sides, and 2" in from the front and back with ½" diameter.



# HYDROFIRE ΕΠΕ

Buildings - Industry - Marine – Waterworks

END OF AG. PANTELEIMONOS Str. (ELEONAS)

GR-12241 EGALEO,

Tel.: +30 210 3412 749-750 Fax: +30 210 3412 406

[www.hydrofire.gr](http://www.hydrofire.gr), email: [info@hydrofire.gr](mailto:info@hydrofire.gr)



[victaulic.com](http://victaulic.com)

## 5.0 PERFORMANCE

### Compressor Requirements

#### 115V, 60 HZ

Model	HP	Voltage	Gallons W/O Vent 0 – 18 PSIG	Gallons W/O Vent 0 – 30 PSIG	Gallons W/Vent 0 – 18 PSIG	Gallons W/Vent 0 – 30 PSIG	CFM			Amps		
							Open Flow	Avg. CFM 18 PSIG	Avg. CFM 30 PSIG	Open Flow	18 PSIG	30 PSIG
VIC16A	1/8	115/230/60/50	276	164	187	127	1.6	1.4	1.2	2.4	2.9	3.0
VIC25A	1/4	115/230/60/50	406	237	256	177	2.3	2.0	1.7	2.9	3.3	3.5
VIC50A	1/2	115/230/60/50	600	338	456	291	3.3	2.9	2.6	2.7	3.5	3.8
VIC75A	3/4	115/230/60/50	840	500	675	440	4.4	4.1	3.8	6.7	7.8	8.5
VIC100A	1.0	115/230/60/50	1170	690	1020	610	6.0	5.6	5.3	7.5	8.5	9.2

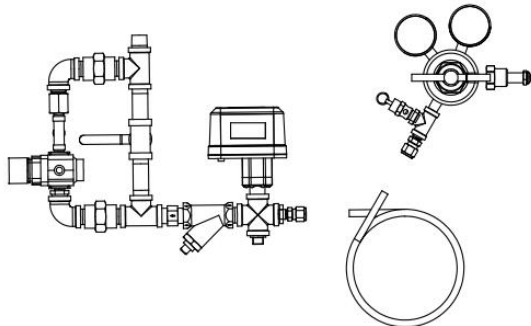
#### 230V, 50 HZ

Model	HP	Voltage	Gallons W/O Vent 0 – 18 PSIG	Gallons W/O Vent 0 – 30 PSIG	Gallons W/Vent 0 – 18 PSIG	Gallons W/Vent 0 – 30 PSIG	CFM			Amps		
							Open Flow	Avg. CFM 18 PSIG	Avg. CFM 30 PSIG	Open Flow	18 PSIG	30 PSIG
VIC16A	1/8	115/230/60/50	231	135	140	91	1.3	1.2	1.0	0.9	1.2	1.3
VIC25A	1/4	115/230/60/50	315	184	200	140	1.9	1.7	1.4	1.0	1.3	1.5
VIC50A	1/2	115/230/60/50	490	275	330	220	2.7	2.4	2.0	1.2	1.5	1.7
VIC75A	3/4	115/230/60/50	680	400	500	320	3.5	3.2	2.9	2.5	2.7	2.9
VIC100A	1.0	115/230/60/50	940	550	830	490	4.7	4.4	4.1	2.9	3.1	3.4

#### NOTES

- Installations for 1/4 hp compressors can only be configured as base mounted or with a switch; air maintenance trims with tank options are not available.
- VIC25A and VIC25AC have maximum pressure of 30 PSIG. All other compressors are rated at 60 PSIG Maximum.

### Nitrogen Requirements



System Size (gallons)	13 psi fill Victaulic:						Approx. Fill Time (minutes)
	Freezer Temperature (Deg F)						
	20	0	-20	-40	-60		
	Nitrogen Supply (lbs)						
250	5.0	5.3	5.5	5.8	6.0	1	
500	10.1	10.5	11.0	11.5	12.1	2	
750	15.1	15.8	16.5	17.3	18.1	3	
1000	20.2	21.0	22.0	23.0	24.2	4	

#### NOTES

- 7G7 Nitrogen requirements when nitrogen is fed to 745 by N2 high pressure cylinders (This does not apply totally to nitrogen regen system integration).
- For Nitrogen Regeneration systems with a tank, utilize 757 Air Maintenance Device. Option 2 under "Air Maintenance Selection" in order sheet on page 6.

## 6.0 NOTIFICATIONS

### ⚠ WARNING

- The FireLock™ Fire-Pac must be installed and maintained in accordance with the installation, maintenance, and testing manual for the fire protection valve.
- Installation must conform to NFPA standards and any additional requirements of the local authority having jurisdiction.
- The owner is responsible for the proper maintenance of the fire protection system.

Failure to follow these instructions could cause improper valve operation, resulting in serious personal injury and/or property damage.



# HYDROFIRE EPE

Buildings - Industry - Marine - Waterworks  
END OF AG. PANTELEIMONOS Str. (ELEONAS)  
GR-12241 EGALEO,

Tel.: +30 210 3412 749-750 Fax: +30 210 3412 406  
www.hydrofire.gr, email: info@hydrofire.gr



victaulic.com

## 7.0 REFERENCE MATERIALS

### Series 745 FireLock™ Fire-Pac Panel Options

Name/Company: \_\_\_\_\_  
E-mail: \_\_\_\_\_  
Phone: \_\_\_\_\_

### FireLock™ Series 745 Fire-Pac Order Form

Class	Type	Style Number	Size	Trim Selection <sup>5</sup>	Panel Design	Applicable Wiring Code	Compressor Selection	Air Maintenance Selection	Cabinet Options/Color Selector
S	A - Dry D - Deluge P - Preaction W - Wet	745	014 1 1/2" 020 2" 024 2 1/2" 030 3" 040 4" 165 165.1mm 060 6" 080 8 1/8"	01 - Dry Actuated 1A - Dry Actuated with Added Control Valve 02 - Dry Actuated with Added Control Valve <sup>1</sup> 03 - Deluge Preaction Pilot Line 3A - Deluge Preaction Pilot Line with Added Control Valve 3B - Deluge Wet Pilot 04 - Deluge Electric 44 - Deluge Electric with Added Control Valve 05 - Preaction Single-Interlocked Electric with Added Control Valve 5A - Preaction Single-Interlocked Electric with Added Control Valve 5B - Preaction Single-Interlocked Electric with Added Control Valve <sup>11</sup> 5C - Preaction Auto-Comerter Single-Interlocked Electric with Added Control Valve <sup>11</sup> 06 - Preaction Single-Interlocked Electric with Panel Cross-Zone 6A - Preaction Single-Interlocked Electric with Panel Cross-Zone with Added Control Valve <sup>1</sup> 6B - Preaction Auto-Comerter Single-Interlocked Electric with Panel Cross-Zone <sup>11</sup> 6C - Preaction Auto-Comerter Single-Interlocked Electric with Panel Cross-Zone with Added Control Valve <sup>1</sup> 7A - Preaction Double-Interlocked Pneumatic Electric <sup>10</sup> 7B - Preaction Double-Interlocked Electric with Added Control Valve <sup>17</sup> 7C - Preaction Double-Interlocked Electric with Added Control Valve <sup>16</sup> 7D - Preaction Double-Interlocked Electric with Added Control Valve <sup>16</sup> 7E - Preaction Valve-Interlocked with Added Control Valve <sup>11</sup> 7F - Preaction Auto-Comerter Double-Interlocked Pneumatic Electric <sup>10</sup> 7G - Preaction Auto-Comerter Double-Interlocked Electric with Added Control Valve <sup>17</sup> 7H - Preaction Auto-Comerter Double-Interlocked Electric with Added Control Valve <sup>16</sup> 7I - Preaction Auto-Comerter Double-Interlocked Electric with Added Control Valve <sup>16</sup> 08 - Preaction Double-Interlocked Pneumatic Electric <sup>10</sup> 8A - Preaction Double-Interlocked Pneumatic Electric with Added Control Valve <sup>15</sup> W0 - UL-FM Wet Valve with Rearard Chamber W1 - 165/165.1 Wet Valve with Rearard Chamber and FCSwitches <sup>12</sup> W2 - 165/165.1 Wet Valve with Rearard Chamber and FCSwitches <sup>12</sup> 09 - Special <sup>1</sup>	A - No Panel B - 2000 Panel (Includes Two - 12V 12AH Batteries) C - 2000 Panel (ATM) D - 2000 Panel (ATM/ANN-80) E - 2000 Panel (ATM/ANN-100) F - 2000 Panel (ATM/ANN-100-RY) G - 2000 Panel (ATM/ANN-80/ANN-100) H - 2000 Panel (ATM/ANN-80/ANN-100-RY) I - 2000 Panel (ATM/ANN-100/ANN-100-RY) J - 2000 Panel (ANN-80) K - 2000 Panel (ANN-80/ANN-100) L - 2000 Panel (ANN-80/ANN-100/ANN-100-RY) M - 2000 Panel (ANN-80/ANN-100/ANN-100-RY) N - 2000 Panel (ANN-80/ANN-100/ANN-100-RY) O - 2000 Panel (ANN-80/ANN-100/ANN-100-RY) P - 2000 Panel (ANN-80/ANN-100/ANN-100-RY) Q - 2000 Panel (ANN-80/ANN-100/ANN-100-RY) R - 2000 Panel (ANN-80/ANN-100/ANN-100-RY) S - Secondary Addressable Ready T - Weather NEMA-3R Addressable Canadian Panel U - Weather NEMA-3R Addressable European Panel 9 - Special <sup>1</sup>	1 - Std. US/UK Class B 2 - Canadian Class B 3 - US 2000 60Hz Class B 4 - Standard Class A 5 - Canadian Class A 6 - 220V 60Hz Class A 7 - 220V 50Hz Class A 8 - 220V 50Hz Class B A - Addressable Style 4 B - Addressable Style 6 C - Addressable Style 7 N - 220V 50Hz Class A Allow M - 1/4 hp with hour N - 1/2 hp with hour O - 3/4 hp with hour P - 1 hp with hour Q - 1 1/2 hp with hour R - 2 hp with hour S - Special <sup>1</sup>	1 - Base Mounted Air Compressor <sup>1</sup> 2 - Regulated Air Maintenance Trim Assembly Without Compressor <sup>4</sup> 3 - Regulated Air Maintenance Trim Assembly with Tank and Compressor <sup>4</sup> 4 - No Compressor or Regulated Air Maintenance Trim Assembly Connecting One (1) SSC Compressor and One (1) SSC Compressor <sup>1</sup> 5 - No Compressor or Regulated Air Maintenance Trim Assembly with Tank and Compressor <sup>4</sup> 6 - Air Dryer Filter with Regulated Air Maintenance Trim Assembly with Tank and Compressor <sup>4</sup> 7 - Air Dryer Filter with Regulated Air Maintenance Trim Assembly with Tank and Compressor <sup>4</sup> 8 - Air Dryer Filter with Regulated Air Maintenance Trim Assembly with Tank, Compressor, and Optional On/Off Switch A - Base-Mounted Air Compressor with On/Off Switch C - Regulated Air Maintenance Trim Assembly with Tank and Compressor with Optional On/Off Switch 9 - Special <sup>1</sup>	1 - Red, Pipe-Feed and Drain Right 2 - Weatherproof Pipe Feed and Drain Left 3 - Weatherproof Pipe Feed and Drain Right 4 - Weatherproof Pipe Feed and Drain Bottom 5 - Pipe-Feed and Drain Bottom A - Red, Pipe-Feed and Drain Left B - Insulated and Heated, Weatherproof Pipe Feed and Drain Bottom <sup>1</sup> C - Insulated and Heated, Weatherproof Pipe Feed and Drain Left <sup>1</sup> N - NFPA 72 Spices List Switch Option R - Insulated and Heated, Weatherproof Pipe Feed and Drain Right <sup>1</sup> 9 - Special - Any Other Color available. Special Options <sup>1</sup>	

<sup>1</sup> Contact Victaulic for pricing and availability; supplied with 165.1 mm couplings  
<sup>2</sup> Requires a Regulated Air Maintenance Trim Assembly (Option 3) with a tank  
<sup>3</sup> Electric Release with panel cross-zoned  
<sup>4</sup> Applies to Fire-Pac cabinets containing 2 1/2" - 8 inch (73.0 - 219.1 mm) valve sizes only  
<sup>5</sup> WARNING: Values equipped with an accelerator require a compressor for use with an external air source from a shop-air system, tank-mounted air compressor, Nitrogen Regeneration System with Tank, or a tank supplied gas source regulated to under 125 psid/8.6 Bar.  
<sup>6</sup> Regulated Air Maintenance Trim Assembly with compressor is for use with an external air source from a shop-air system, tank-mounted air compressor, Nitrogen Regeneration System with Tank, or a tank supplied gas source regulated to under 125 psid/8.6 Bar.  
<sup>7</sup> 8 inch (219.1 mm) valve trim may be supplied from standard takeout to accommodate cabinet fittings and chases/options. Follow flowpaths for setup.  
<sup>8</sup> Option U requires Option H for Compressor Selection. Option W1/W2 nitrogen pressure switch requires nitrogen gas source to augment to raise the low air pressure switch (closed) when nitrogen tank cannot maintain 100 psid/6.9 Bar (air pressure to 100 psid/6.9 Bar). NOTE: The nitrogen cylinder is not provided with the nitrogen fill kit.  
<sup>9</sup> All insulated and heated options to have low temperature alarms wired into panel or as a standby contact.  
<sup>10</sup> These Fire-Pac options do not carry a UL Listing/PM Approval as an assembly; components are UL Listed/PM approved and installed as per the manufacturer's recommendations. All sizes of addressable panel options require the larger cabinet due to panel size not fitting in smaller cabinet.  
<sup>11</sup> The RP-2000 Panel option is strongly recommended for any Auto-Comerter trim configurations.  
<sup>12</sup> Available in 3 - 8 inch (76.2 - 203.2 mm) sizes only.  
<sup>13</sup> Not available in the US or Canada.  
<sup>14</sup> RP compressor option shall require an Air Maintenance Device.  
<sup>15</sup> Utilizes the Victaulic Series 889 Pneumatic actuator for use with a dry pilot line.  
<sup>16</sup> Utilizes Victaulic Series 170 Electric Instream Controller.  
<sup>17</sup> Utilizes Victaulic Series 170 Low-Pressure Detector and the High-Pressure Airtight Selection Selection is required.  
<sup>18</sup> When a 7/8" (22.2 mm) oratorator is required to meet trim sizes, option B is not available as a maintenance trim with a switch, air maintenance trim with tank options are not available.  
<sup>19</sup> Installation for 1/4 hp compressor can only be configured as base mounted or with a switch, air maintenance trim with tank options are not available.





# HYDROFIRE ΕΠΕ

Buildings - Industry - Marine – Waterworks

END OF AG. PANTELEIMONOS Str. (ELEONAS)

GR-12241 EGALEO,

Tel.: +30 210 3412 749-750 Fax: +30 210 3412 406

[www.hydrofire.gr](http://www.hydrofire.gr), email: [info@hydrofire.gr](mailto:info@hydrofire.gr)



[victaulic.com](http://victaulic.com)

## 7.1 REFERENCE MATERIALS

### FireLock™ Fire-Pac Fire Alarm Control Panel (FACP) Options

Option <sup>5</sup>	Panel Design	Description
A	NO PANEL	This option includes a terminal block for wiring connections only.
B	NOTIFIER <sup>3</sup> RP-2001 <sup>4</sup> Panel with Two 12-Volt, 12AH Batteries <sup>6</sup>	This option includes the base panel with two 12AH batteries. The base panel provides the alarm and trouble relays. The alarm indicates when the valve trips, and the trouble indicates a technical difficulty (ie. Loss of power, loose wire, etc.). Three programmable relay contacts are provided for remote signaling.
C	NOTIFIER <sup>3</sup> RP-2001 <sup>4</sup> Panel with 4XTM	This option includes option "B", plus a supervised output for local energy municipal box transmitter and alarm and trouble reverse polarity.
D	NOTIFIER <sup>3</sup> RP-2001 <sup>4</sup> Panel with 4XTM/ANN-80	This option includes option "C", plus a remote LCD annunciator that mimics the information displayed on the FACP LCD display.
E	NOTIFIER <sup>3</sup> RP-2001 <sup>4</sup> Panel with 4XTM/ANN-I/O	This option includes option "C", plus an LED driver that can be used as an interface with the FACP to drive most customized graphic annunciators.
F	NOTIFIER <sup>3</sup> RP-2001 <sup>4</sup> Panel with 4XTM/ANN-RLY	This option includes option "C", plus 10 additional, programmable Form-C relays.
G	NOTIFIER <sup>3</sup> RP-2001 <sup>4</sup> Panel with 4XTM/ANN-80/ANN-I/O	This option combines the features of option "D" and option "E".
H	NOTIFIER <sup>3</sup> RP-2001 <sup>4</sup> Panel with 4XTM/ANN-80/ANN-RLY	This option combines the features of option "D" and option "F".
I	NOTIFIER <sup>3</sup> RP-2001 <sup>4</sup> Panel with 4XTM/ANN-I/O/ANN-RLY	This option combines the features of option "E" and option "F".
J	NOTIFIER <sup>3</sup> RP-2001 <sup>4</sup> Panel with ANN-80	This option includes option "B", plus a remote LCD annunciator that mimics the information displayed on the FACP LCD display.
K	NOTIFIER <sup>3</sup> RP-2001 <sup>4</sup> Panel with ANN-80/ANN-I/O	This option includes option "B", plus a remote LCD annunciator that mimics the information displayed on the FACP LCD display and an LED driver that can be used as an interface with the FACP to drive most customized graphic annunciators.
L	NOTIFIER <sup>3</sup> RP-2001 <sup>4</sup> Panel with ANN-80/ANN-RLY	This option includes option "B", plus a remote LCD annunciator that mimics the information displayed on the FACP LCD display and 10 additional, programmable Form-C relays.
M	NOTIFIER <sup>3</sup> RP-2001 <sup>4</sup> Panel with ANN-80/ANN-I/O/ANN-RLY	This option includes option "K", plus 10 additional, programmable Form-C relays.
N	NOTIFIER <sup>3</sup> RP-2001 <sup>4</sup> Panel with ANN-I/O	This option includes option "B", plus an LED driver that can be used as an interface with the FACP to drive most customized graphic annunciators.
P	NOTIFIER <sup>3</sup> RP-2001 <sup>4</sup> Panel with ANN-RLY	This option includes option "B", plus 10 additional, programmable Form-C relays.
Q	NOTIFIER <sup>3</sup> RP-2001 <sup>4</sup> Panel with ANN-I/O/ANN-RLY	This option combines the features of option "K" and option "P".
R	NOTIFIER <sup>3</sup> NFS-320 with Addressable Panel	This option includes a NOTIFIER* NFS-320 addressable panel capable of networking with 318 intelligent devices through the NOTI-FIRE-NET protocol and contains two, 12AH batteries. All of the trouble and supervisory alarms are discretely wired and factory programmed to alert to specific issues with the Fire-Pac. Any applicable solenoid releases are factory wired for release. Commissioning and programming of this option shall be completed by a NOTIFIER* approved contractor. Contact Victaulic for additional information.
S	Secondary Addressable-Ready Unit (No Panel, NOTIFIER* XP10-M Ten-Input Monitor Module)	This option has all of the trouble and supervisory alarms discretely wired to a NOTIFIER* XP10-M board. It is ready to interface to a contractor-supplied NOTIFIER* NFS-320 or compatible addressable panel through its Signaling Line Circuit (SLC) loop. In addition, any applicable solenoid releases are factory wired for release. Commissioning and programming of this option shall be completed by a NOTIFIER* approved contractor. Contact Victaulic for additional information.

<sup>3</sup> NOTIFIER is a registered trademark of the Honeywell International Inc.

<sup>4</sup> RP-2001 is designated as RP-2001C for Canada, and RP-2001E for Europe.

<sup>5</sup> This designation corresponds with the "Panel Design" section of the Figure Number System chart.

<sup>6</sup> It is the sole responsibility of the Fire Alarm system designer, Licensed electrician, or Certified installer to properly calculate the detection, maximum devices per circuit, and the battery requirements in accordance with NFPA 72 and all other applicable National, State, and local codes in accordance with the AHJ's requirements. For calculating battery size, you need to add a 2.35mA draw for the electrical components in the cabinet to your overall calculations.

#### NOTES

- **FACP** – Fire Alarm Control Panel
- **LCD** – Liquid Crystal Display
- **LED** – Light Emitting Diode
- **Class B** – 2-wire configuration
- **Class A** – 4-wire configuration
- This product shall be manufactured by Victaulic or to Victaulic specifications. All products to be installed in accordance with current Victaulic installation/assembly instructions. Victaulic reserves the right to change product specifications, designs and standard equipment without notice and without incurring obligations.



# HYDROFIRE ΕΠΕ

Buildings - Industry - Marine – Waterworks

END OF AG. PANTELEIMONOS Str. (ELEONAS)

GR-12241 EGALEO,

Tel.: +30 210 3412 749-750 Fax: +30 210 3412 406

[www.hydrofire.gr](http://www.hydrofire.gr), email: [info@hydrofire.gr](mailto:info@hydrofire.gr)



[victaulic.com](http://victaulic.com)

## 7.1 REFERENCE MATERIALS (CONTINUED)

### FireLock™ Fire-Pac Fire Alarm Control Panel (FACP) Options

Option <sup>5</sup>	Panel Design	Description
T	Notifier NFS-320C Addressable Canadian Panel	This option includes a NOTIFIER* NFS-320C addressable panel capable of networking with 318 intelligent devices through the NOTI-FIRE-NET protocol and contains two, 12AH batteries. All of the trouble and supervisory alarms are discretely wired and factory programmed to alert to specific issues with the Fire-Pac. Any applicable solenoid releases are factory wired for release. Commissioning and programming of this option shall be completed by a NOTIFIER* approved contractor. Contact Victaulic for additional information.
U	Notifier NFS-320E - Addressable European panel 220V 50 Hz	This option includes a NOTIFIER* NFS-320E addressable panel capable of networking with 318 intelligent devices through the NOTI-FIRE-NET protocol and contains two, 12AH batteries. All of the trouble and supervisory alarms are discretely wired and factory programmed to alert to specific issues with the Fire-Pac. Any applicable solenoid releases are factory wired for release. Commissioning and programming of this option shall be completed by a NOTIFIER* approved contractor. Contact Victaulic for additional information.
9	Special	

<sup>3</sup> NOTIFIER is a registered trademark of the Honeywell International Inc.

<sup>4</sup> RP-2001 is designated as RP-2001C for Canada, and RP-2001E for Europe.

<sup>5</sup> This designation corresponds with the "Panel Design" section of the Figure Number System chart.

<sup>6</sup> It is the sole responsibility of the Fire Alarm system designer, Licensed electrician, or Certified installer to properly calculate the detection, maximum devices per circuit, and the battery requirements in accordance with NFPA 72 and all other applicable National, State, and local codes in accordance with the AHJ's requirements. For calculating battery size, you need to add a 2.35mA draw for the electrical components in the cabinet to your overall calculations.

#### NOTES

- **FACP** – Fire Alarm Control Panel
- **LCD** – Liquid Crystal Display
- **LED** – Light Emitting Diode
- **Class B** – 2-wire configuration
- **Class A** – 4-wire configuration
- This product shall be manufactured by Victaulic or to Victaulic specifications. All products to be installed in accordance with current Victaulic installation/assembly instructions. Victaulic reserves the right to change product specifications, designs and standard equipment without notice and without incurring obligations.





# HYDROFIRE ΕΠΕ

Buildings - Industry - Marine – Waterworks

END OF AG. PANTELEIMONOS Str. (ELEONAS)

GR-12241 EGALEO,

Tel.: +30 210 3412 749-750 Fax: +30 210 3412 406

[www.hydrofire.gr](http://www.hydrofire.gr), email: [info@hydrofire.gr](mailto:info@hydrofire.gr)



[victaulic.com](http://victaulic.com)

## 7.2 REFERENCE MATERIALS

### Series 745 FireLock™ Cabinet Options

Option <sup>7</sup>	Cabinet Options/Color Selector	Description
1	Red	Pipe feed and drain on the right side of the cabinet.
2	Weatherproofing, Pipe feed and drain left	Weatherproof enclosures constructed for either indoor or outdoor use to provide a degree of protection of the equipment inside the enclosure against ingress of solid foreign objects (falling dirt and windblown dust); to provide a degree of protection with respect to harmful effects on the equipment due to the ingress of water (rain, sleet, snow); and that will be undamaged by the external formation of ice on the enclosure. Pipe feed and drain will be located on the left side of the enclosure.
3	Weatherproofing, Pipe feed and drain right	This option includes option "2" but pipe feed and drain will be located on the right side of the enclosure.
4	Weatherproofing, Pipe feed and drain bottom	This option includes option "2" but pipe feed and drain will be located on the bottom of the enclosure. Factory provided panel skirts and insulation from floor to bottom of the cabinet shall also be provided.
5	Pipe feed and drain bottom	Pipe feed and drain will be located on the bottom of the cabinet.
A	Red, pipe feed, and drain left	Pipe Feed and drain will be located on the left side of the enclosure.
B	Insulated and Heated, Weatherproofing, Pipe feed and drain bottom	This option includes option "4", plus a heater and insulation. Heater trips at 50°F (10°C), while a temperature alarm switch will activate at 40°F (4.5°C). 20°F (-6.7°C) minimum ambient operating temperature. R3.2 ½" foil faced insulation is applied to all enclosure sides.
L	Insulated and Heated, Weatherproofing, Pipe feed and drain left	This option includes option "2", plus a heater and insulation. Heater trips at 50°F (10°C), while a temperature alarm switch will activate at 40°F (4.5°C). 20°F (-6.7°C) minimum ambient operating temperature. R3.2 ½" foil faced insulation is applied to all enclosure sides.
R	Insulated and Heated, Weatherproofing, Pipe feed and drain right	This option includes option "3", plus a heater and insulation. Heater trips at 50°F (10°C), while a temperature alarm switch will activate at 40°F (4.5°C). 20°F (-6.7°C) minimum ambient operating temperature. R3.2 ½" foil faced insulation is applied to all enclosure sides.
9	Special	Any other color and/or special options
N	NFPA 72 Bypass Test Switch Option	

<sup>7</sup> This designation corresponds with the "Cabinet Options/Color Selector" section of the Figure Number System chart.

## 7.0 REFERENCE MATERIALS

[30.01: Victaulic FireLock™ Alarm Check Valve and European Alarm Check Valve Stations Series 751](#)

[30.84: Victaulic FireLock NXT™ Actuated Valve with Preaction AutoConvert Trim](#)

[31.80: Victaulic FireLock NXT™ Dry Valve Series 768N](#)

[31.82: Victaulic FireLock NXT™ Preaction Trim Series 769N](#)

[I-745: Victaulic Series 745 FireLock™ Fire-Pac for FireLock NXT™ Valves](#)

### User Responsibility for Product Selection and Suitability

Each user bears final responsibility for making a determination as to the suitability of Victaulic products for a particular end-use application, in accordance with industry standards and project specifications, and the applicable building codes and related regulations as well as Victaulic performance, maintenance, safety, and warning instructions. Nothing in this or any other document, nor any verbal recommendation, advice, or opinion from any Victaulic employee, shall be deemed to alter, vary, supersede, or waive any provision of Victaulic Company's standard conditions of sale, installation guide, or this disclaimer.

### Intellectual Property Rights

No statement contained herein concerning a possible or suggested use of any material, product, service, or design is intended, or should be construed, to grant any license under any patent or other intellectual property right of Victaulic or any of its subsidiaries or affiliates covering such use or design, or as a recommendation for the use of such material, product, service, or design in the infringement of any patent or other intellectual property right. The terms "Patented" or "Patent Pending" refer to design or utility patents or patent applications for articles and/or methods of use in the United States and/or other countries.

### Note

This product shall be manufactured by Victaulic or to Victaulic specifications. All products to be installed in accordance with current Victaulic installation/assembly instructions. Victaulic reserves the right to change product specifications, designs and standard equipment without notice and without incurring obligations.

### Installation

Reference should always be made to the Victaulic installation handbook or installation instructions of the product you are installing. Handbooks are included with each shipment of Victaulic products, providing complete installation and assembly data, and are available in PDF format on our website at [www.victaulic.com](http://www.victaulic.com).

### Warranty

Refer to the Warranty section of the current Price List or contact Victaulic for details.

### Trademarks

*Victaulic* and all other Victaulic marks are the trademarks or registered trademarks of Victaulic Company, and/or its affiliated entities, in the U.S. and/or other countries.