



HYDROFIRE ΕΠΕ

Buildings - Industry - Marine – Waterworks
 END OF AG. PANTELEIMONOS Str. (ELEONAS)
 GR-12241 EGALEO,

Tel.: +30 210 3412 749-750 Fax: +30 210 3412 406
www.hydrofire.gr, email: info@hydrofire.gr



IPS CARBON STEEL PIPE – FIRE PROTECTION PRODUCTS

30.32

FireLock® Water Motor Alarm

SERIES 760

2831 104/01
 SEE VICTAULIC PUBLICATION 10.01 FOR DETAILS

The Series 760 FireLock Water Motor Alarm is a mechanical, water-powered device signaling the flow of water in an automatic sprinkler system. The unit is usually installed on a wall with the motor inside the building and the gong outside for maximum audibility. A 100 mesh strainer with 3/4" NPT threaded end connection is provided for compliance with NFPA 13 requirements.

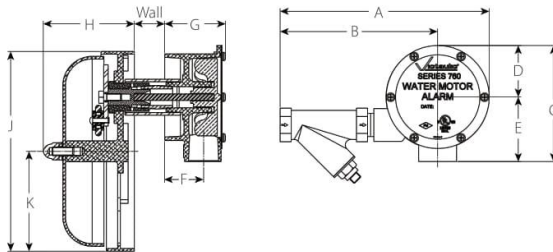
Unless otherwise ordered, the wall setup will be furnished. This will fit wall thicknesses from 2 – 13/51 – 330 mm. If thicker, specify at the time of order. A riser mounting kit is available that will fit pipe sizes from 2 1/2 – 8/65 – 200 mm inclusive, in vertical or horizontal position.

The water motor gong and mechanism are made of aluminum, stainless steel and other non corrosive materials to prevent rust and staining. Red enamel is standard finish for the gong shell.

NOTE: The VdS/CE Listed water motor alarm is provided with ISO 7-1 threads (BSP) and maintains the UL/FM Listings.



DIMENSIONS



Nominal Size	Dimensions – Inches/mm										Approx. Wgt. Each
Inches mm	A	B	C	D	E	F	G	H	J	K	Lbs. kg
3/4	9.42 239	7.10 180	5.23 133	2.32 59	2.91 74	1.75 45	2.74 70	4.10 104	9.00 229	4.50 114	6.7 3.0

JOB/OWNER

System No. _____
 Location _____

CONTRACTOR

Submitted By _____
 Date _____

ENGINEER

Spec Sect _____ Para _____
 Approved _____
 Date _____

www.victaulic.com

VICTAULIC IS A REGISTERED TRADEMARK OF VICTAULIC COMPANY. © 2020 VICTAULIC COMPANY. ALL RIGHTS RESERVED.

REV_G



30.32_1



HYDROFIRE ΕΠΕ

Buildings - Industry - Marine – Waterworks

END OF AG. PANTELEIMONOS Str. (ELEONAS)

GR-12241 EGALEO,

Tel.: +30 210 3412 749-750 Fax: +30 210 3412 406

www.hydrofire.gr, email: info@hydrofire.gr



IPS CARBON STEEL PIPE – FIRE PROTECTION PRODUCTS

30.32

FireLock® Water Motor Alarm

SERIES 760

OPERATION

For proper operation of this device, the total length of alarm line piping should not exceed 75 feet/23m. The water motor should not be located more than 20 feet/6 m above the sprinkler control valve. Alarm line piping from the retard chamber exit to the water motor must be galvanized and at least ¾"/20 mm in size. If pressure is low or if longer runs of piping are necessary, larger size piping shall be used.

Not more than three sprinkler systems shall be connected to one water motor alarm and the systems controlled by the valves should be in the same fire area. Check valves shall be installed in the lines from each valve to ensure the proper operation of the water motor gong.

The ¾"/20 mm strainer provided should be installed in the alarm prior to the water motor alarm.

Piping shall be pitched so that after operation the water will drain back to the valve and drain through a corrosion resistant orifice not larger than ⅛"/3 mm. Drains shall be conducted to a place where there is no possibility of damage to either persons or property when alarm is operating. Drain pipes shall be so arranged as not to expose any part of the sprinkler system to frost. Wherever possible, drains should be located in a heated space.

INSTALLATION

For Installation Instructions, refer to the I-760 Water Motor Alarm.

WARRANTY

Refer to the Warranty section of the current Price List or contact Victaulic for details.

NOTE

This product shall be manufactured by Victaulic or to Victaulic specifications. All products to be installed in accordance with current Victaulic installation/assembly instructions. Victaulic reserves the right to change product specifications, designs and standard equipment without notice and without incurring obligations.

For complete contact information, visit www.victaulic.com

30.32 2463 REV G UPDATED 03/2021

VICTAULIC IS A REGISTERED TRADEMARK OF VICTAULIC COMPANY. © 2020 VICTAULIC COMPANY. ALL RIGHTS RESERVED.

30.32

